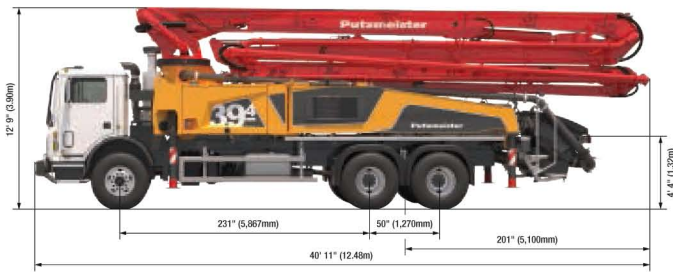
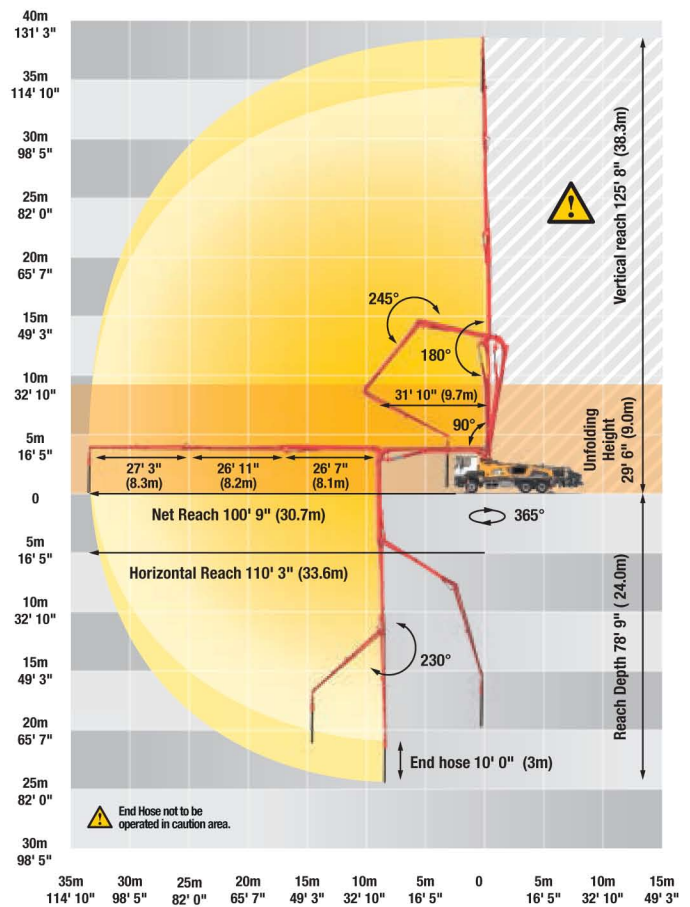


39Z-METER

TRUCK-MOUNTED CONCRETE BOOM PUMP



39Z-Meter Range Diagram



Vertical reach: **125'8"**

Horizontal reach: **113'6"**

Reach from front of truck: **100'9"**

Boom unfolding height: **29'6"**

Maximum rated output (rod): **138 cubic meters/hr**

Maximum rated output (piston): **94 cubic meters/hr**

Front outrigger spread: **19'8"**

Rear outrigger spread: **24'7"**

Front outrigger maximum load: **47,000 lbs**

Rear outrigger maximum load: **47,000 lbs**

Vehicle length: **40'11"**

Vehicle weight: **25,581 Kg**